



HOW TO CREATE A PRINT-READY FILE - RIGID MEDIA

The following instructions will help you create a print-ready file. If after reading them you are still unsure about anything, please visit the [FAQ](#) section of our website, request a professional File Check or contact customer services.

1 FILE FORMAT

Send your file in PDF **format in 1:1 scale (not password protected)**.

2 FORMAT ORIENTATION

The orientation of the pages of the PDF must match the choice made in your order (horizontal or vertical). This is important to ensure accessories such as pole pockets, eyelets etc. are positioned correctly.

3 RESOLUTION

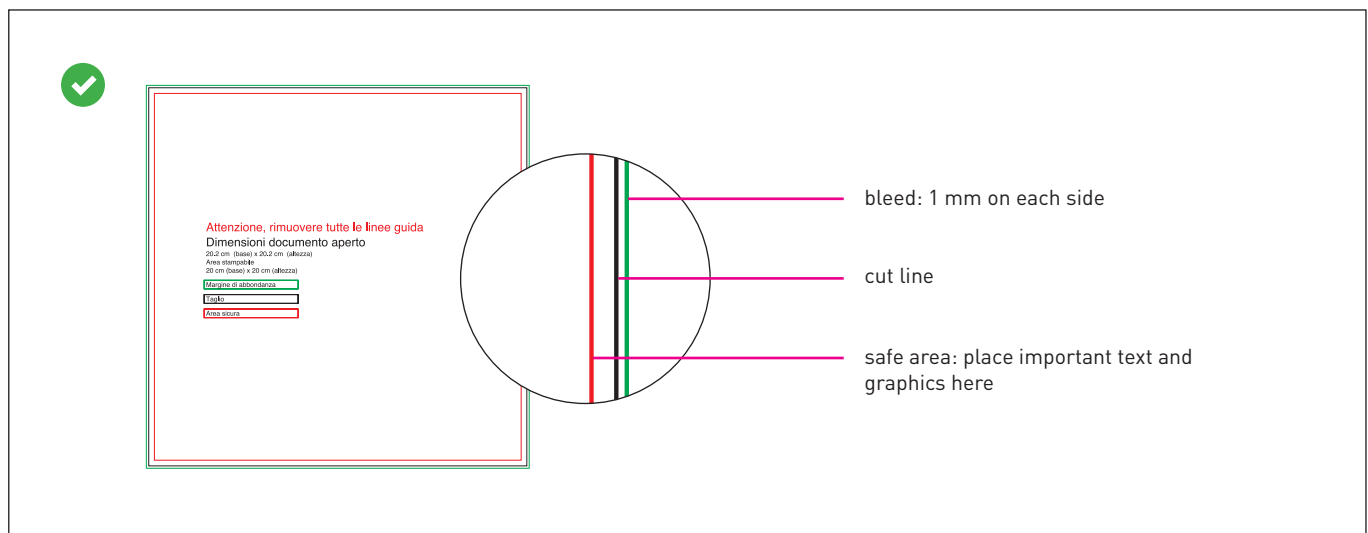
The optimal resolution for the print files is **between 100 and 150 ppi**.

4 COLOURS

All files should be sent in **CMYK** (cyan, magenta, yellow, black) format with the **Fogra 39** colour profile. Images in RGB or with PANTONE colours will be converted automatically using a standard colour separation profile. The same colour may vary slightly in appearance depending on the media onto which it is printed, as a result of the material's physical composition.

5 MARGINS AND BLEED

Download the template for the product you have purchased; the bleed will already be set up correctly. Rigid media require a **1 mm bleed on each side**. Text should be placed at least 3 mm from the cut line.



6 TEMPLATE

Download **the template** for your chosen product from the website and use it as the basis for your work: you will find the dimensions you gave when ordering, the bleed and other guidelines already correctly set up. Insert your artwork, **delete all guidelines** and save the file as a high-quality PDF without crop marks. If you have chosen any additional options, follow the instructions given in the paragraphs below.

7 TILING

If your print job is larger than the maximum print dimensions, which are different for each material, it will be tiled, i.e. divided into multiple panels of equal size. You will be warned about this when filling in the order form.

8 ADDITIONAL INFORMATION

The minimum printable line width is 0.5 pt.

For transparent Plexiglas® send us the file in its normal orientation, and it will be mirrored when printed.

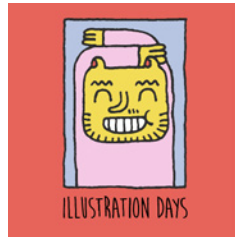
GOOD TO KNOW - Rigid media




**DOWNLOAD
 THE TEMPLATE**




**INSERT YOUR
 ARTWORK**




**DELETE ALL
 GUIDELINES**




**SAVE
 THE PDF**




**PRINTED
 RESULT**

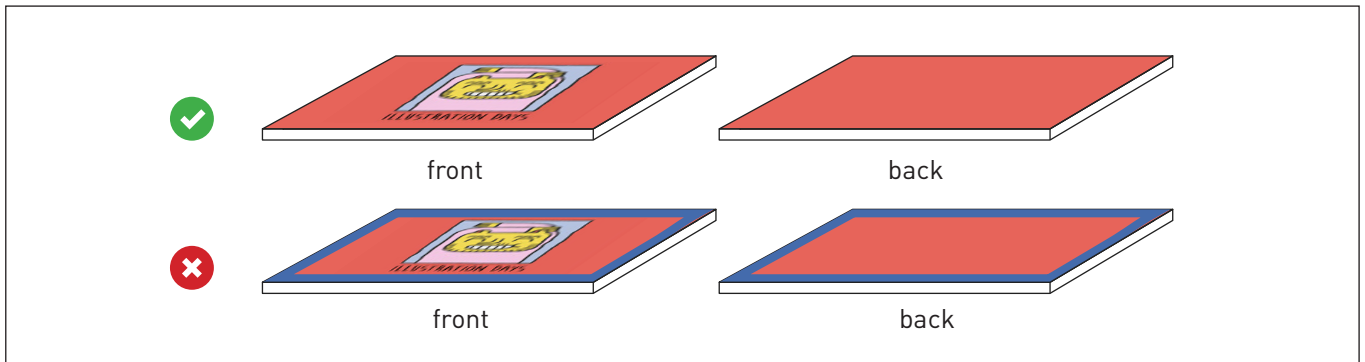
-  PDF
-  100-150 ppi
-  CMYK
-  FOGRA 39
-  1 mm bleed
-  crop marks

9 DOUBLE-SIDED PANELS

Double-sided panels require a **5 mm bleed on each side**. Download the template from the order page: the bleed will already be set up correctly.

We advise you to place text at least 5mm from the cutting edge

In addition, we **do not advise placing frames and passepartouts too close to the edges**, to avoid any inaccuracy due to the cutting tolerances.



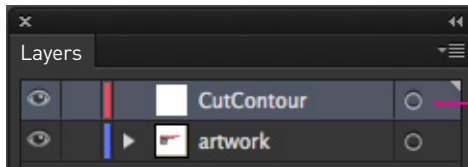
For shaped, double-sided panels tags you only need to create the cut line on the first page of the PDF, naming it CutContour.



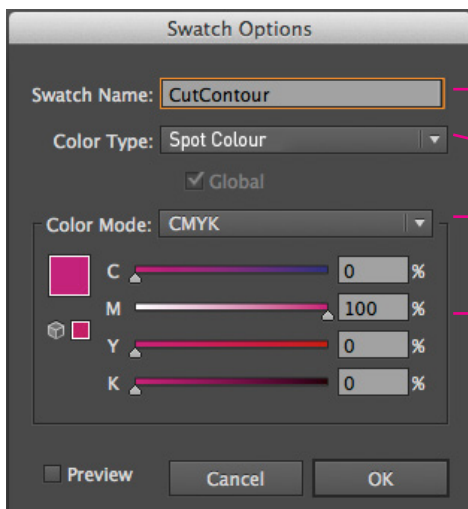
10 CUT TO SHAPE

If you have chosen the 'Cut to Shape' option, follow these steps to create your cut path correctly.

- Create a new layer from the **Layers** palette, and name it "CutContour".
- Create a new colour swatch from the **Swatches** palette and name it "CutContour"; select **Spot Colour** as the **Colour Type** and assign the following CMYK percentages: 0, 100, 0, 0 (magenta only).
- Create a vector outline on the **CutContour** layer which corresponds to the cut line for your panel, and assign it a stroke colour that corresponds to the newly-created **CutContour** swatch.
- Save the PDF, keeping the layers separate.



CutContour layer



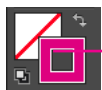
CutContour swatch

name it "CutContour" (not cutcontour or CUTCONTOUR)

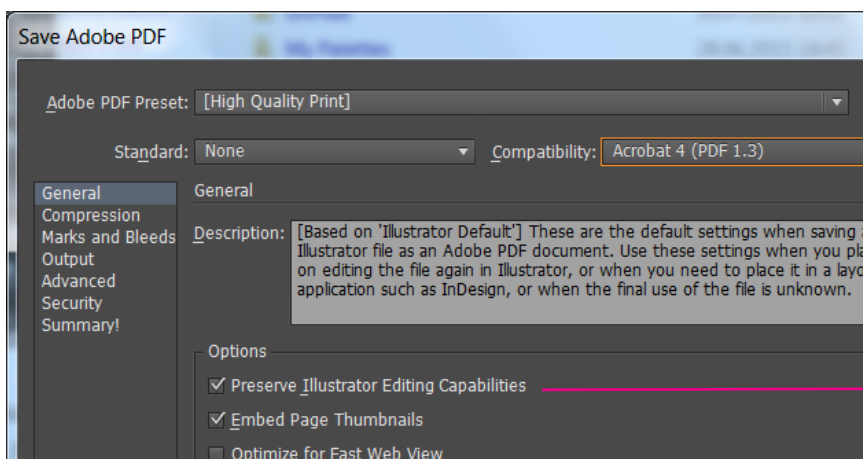
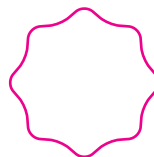
colour type: Spot Colour

colour mode: CMYK

C: 0%
M: 100%
Y: 0%
K: 0%




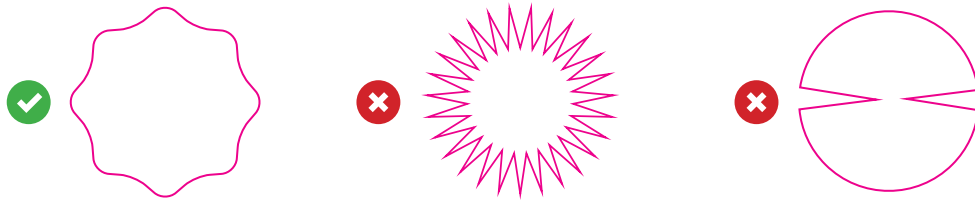
CutContour stroke colour



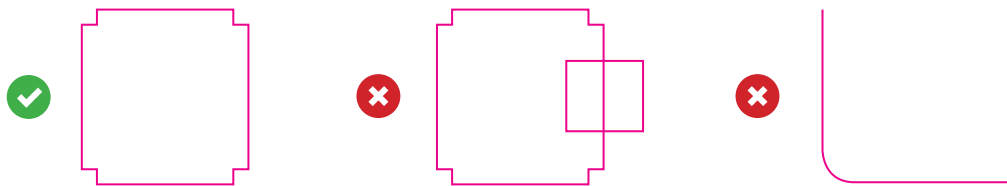
Save the PDF,
keeping the layers
separate

GOOD TO KNOW - CutContour path

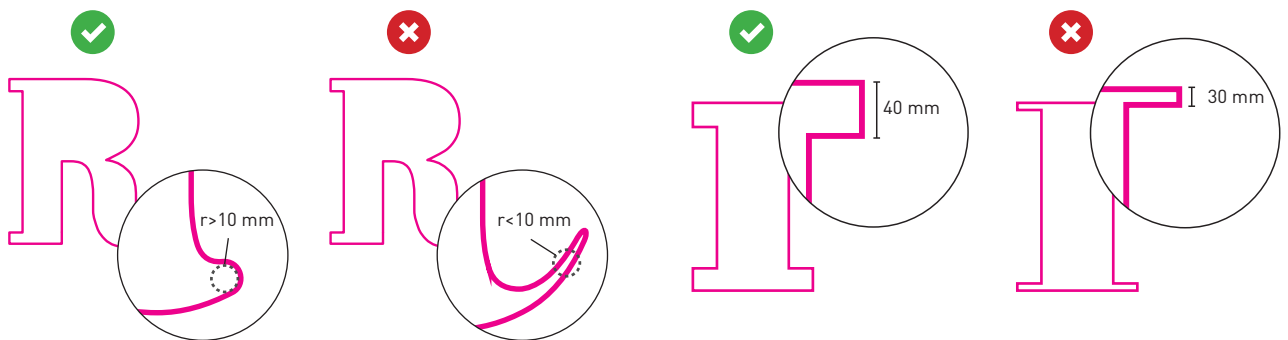
 Do not create overly complex CutContour paths, as this could cause the cut to be inaccurate or uneven.



 The CutContour path must consist of a single, closed line.



 The minimum radius in the corners is 10 mm, and the minimum cut width is 40 mm.

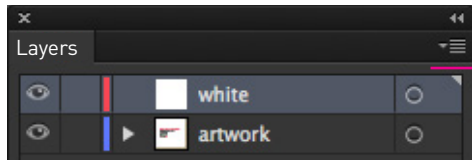


11 WHITE PRINTING

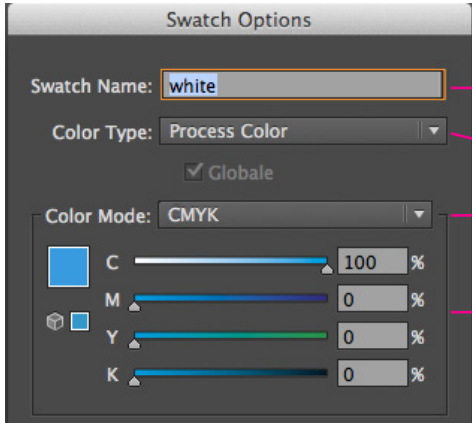
If you have chosen the “**selective white**” option, follow these instructions:

- Create a new layer from the **Layers** palette, name it “**white**” and position it **above the layer containing the artwork**.
- Create a new colour swatch from the **Swatches** palette and name it “**white**”; select **Spot Colour** as the **Colour Type** and assign the following CMYK percentages: 100, 0, 0, 0 (cyan only).
- Create a vector path on the “**white**” layer (no raster images) which corresponds to the area of the artwork you want to highlight with the white.
- Give the vector path the newly-created “**white**” fill colour.
- Select all the artwork on the “**white**” layer, and on the **Attributes** palette (Window>Attributes) tick the option “**overprint fill**”.
- Ensure you keep the layers separate when saving the PDF.

If you have chosen the “**solid white**” option you do not need to create a path: the system will automatically insert a white layer that covers the entire surface of the panel.



white **layer** above the artwork



in Illustrator: Window > Swatches

give it the name "**white**"
(all lower case, not WHITE or White)

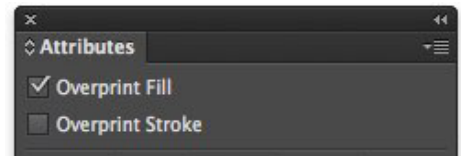
colour type: Spot Colour

colour mode: CMYK

C: 100%
M: 0%
Y: 0%
K: 0%



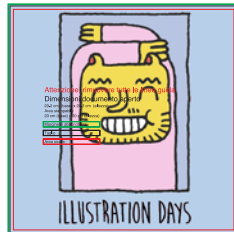
white **fill** colour



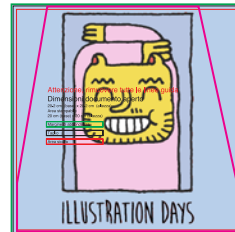
GOOD TO KNOW - Materials cut to shape and white printing



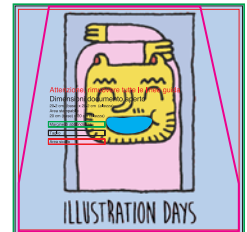
DOWNLOAD
THE TEMPLATE



ADD YOUR
ARTWORK



CREATE THE
"CutContour" CUT PATH



if required, CREATE
THE "white" LAYER



DELETE ALL
GUIDELINES



SAVE THE PDF
IN LAYERS



PRINTED
RESULT