

HOW TO CREATE A PRINT-READY FILE:

LAMP-POST BANNERS

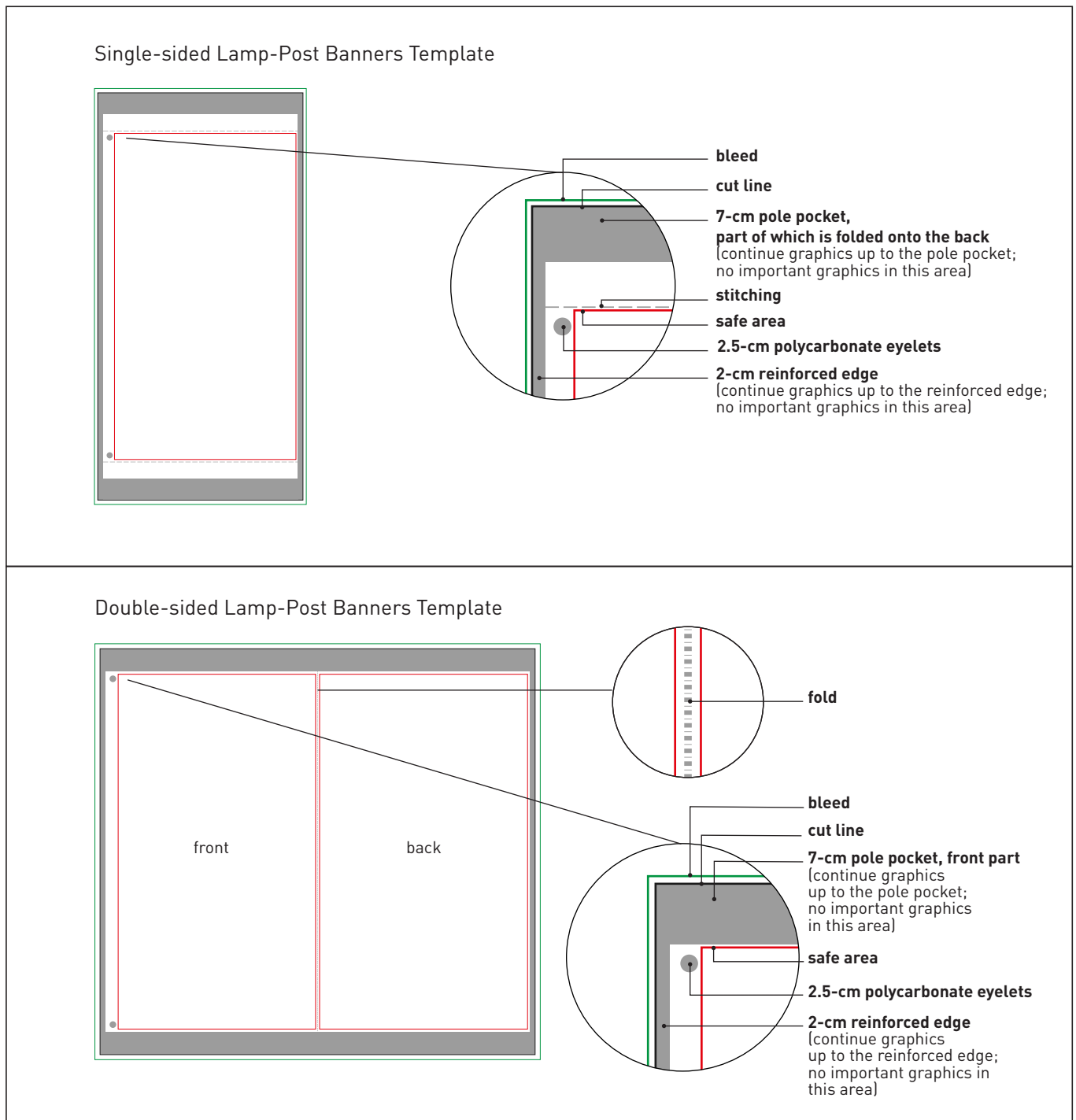
The following instructions will help you create a print-ready file. If after reading them you are still unsure about anything, please visit the [FAQ](#) section of our website, request a [professional File Check](#) or contact customer services.

1 FILE FORMAT

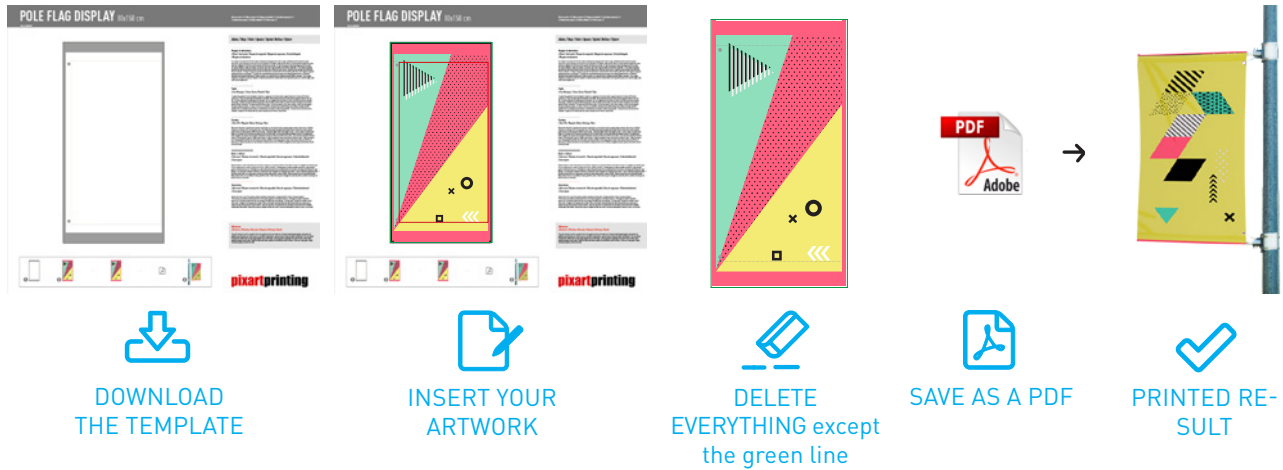
Send your file in PDF format (not password protected).

2 TEMPLATE

Download the template for your chosen product from the website and use it as the basis for your work: you will find the dimensions you gave when ordering, the bleed and other guidelines already correctly set up. Insert your artwork, **delete all guidelines except the green lines** and save the file as a high-quality PDF without crop marks.



GOODTO KNOW - Lamp-Post Banners



3 COLOURS

All files should be sent in **CMYK** (cyan, magenta, yellow, black) format with the **Fogra 39 colour profile**.

Images in RGB or with PANTONE colours will be converted automatically using a standard colour separation profile. The same colour may vary slightly in appearance depending on the media onto which it is printed, as a result of the material's physical composition.

4 RESOLUTION

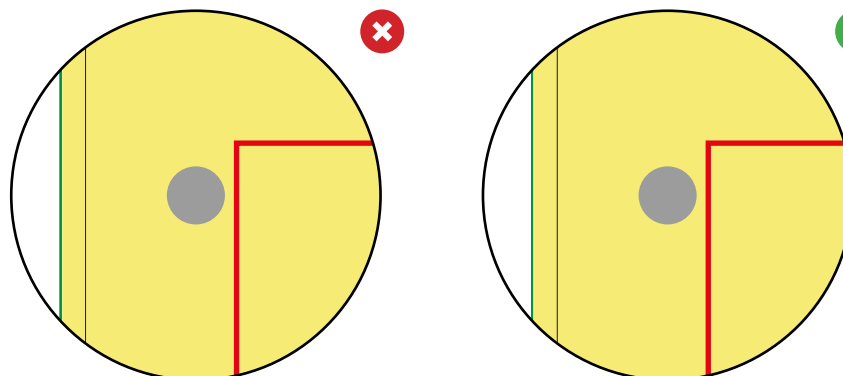
The optimal resolution for the print files is **between 100 and 150 ppi**.

5 ADDITIONAL INFORMATION

The minimum line width is 0.5 pt. We **do not advise placing frames and too close to the edges**, to avoid any inaccuracy due to the cutting tolerances.

GOOD TO KNOW

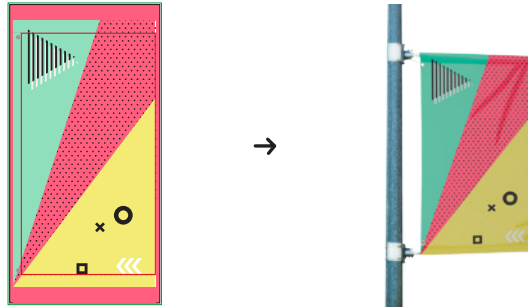
 **Important:** Do not position important graphics where the eyelets will be inserted.



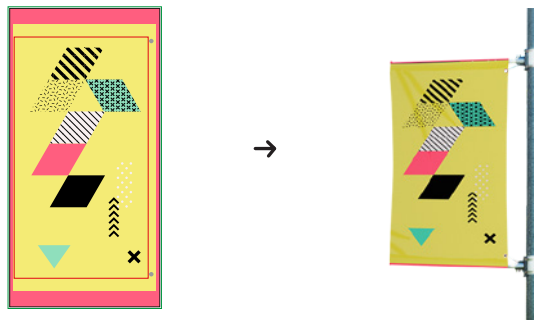
Important: Continue the graphic up to the pole pocket and reinforced edge but do not place important graphics or messages in this area.

Important: The eyelets must be positioned on the side of the fabric near the pole.

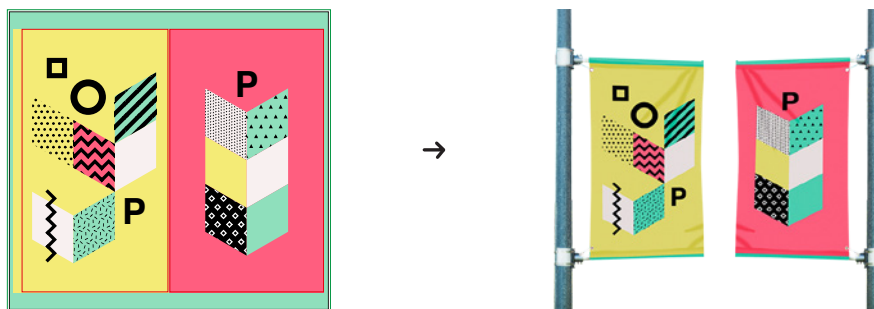
Single-sided Lamp-Post Banners, eyelets on the left for a pole on the left:



Single-sided Lamp-Post Banners, eyelets on the right for a pole on the right:



Double-sided Lamp-Post Banners, eyelets on the left for a pole on the left:



Double-sided Lamp-Post Banners, eyelets on the right for a pole on the right:

